

NEOREST 600

MS990CGR

TOTO

1155 Southern Road
Morrow, GA 30260
(770) 282 8686

For your safety, be sure to inspect your Neorest 600 occasionally.

- Is the power plug abnormally hot?
- Is the power plug covered with dust?
- Is the outlet loose?
- Is your Neorest 600 operating differently than usual?

* In case anything is abnormal, contact TOTO USA to prevent a fire or an electrical shock.



NEOREST

* Thank you for your recent purchase of the TOTO Neorest. Please read the enclosed information to ensure the safe use of your product.

Important Safety Instructions	2	Introduction
Operational Instructions	5	
Tips for Using the NEOREST 600....	6	
Performance Features	7	
Parts and Features	9	
Before Using the NEOREST 600....	11	
How to Use the NEOREST 600.....	13	Operation
For Best Results	15	
● Adjusting the Temperature	15	
● Deodorizing	16	
● Opening and Closing the Toilet Seat and Lid.....	17	
● Flushing.....	20	
To Conserve Energy	23	
● Using the Energy Saver Feature - "TIMER ON/OFF"	23	
● Shutting Off Energy Saver Feature - "TIMER ON/OFF"	24	
● Using the Energy Saver - "AUTO ON/OFF"	25	
● Shutting Off the Energy Saver Feature - "AUTO ON/OFF"	27	
● If You Are Using the "TIMER ON/OFF" and the "AUTO ON/OFF" Features at the Same Time	28	
Caring for your NEOREST.....	29	Maintenance
● Before Cleaning the NEOREST.....	29	
● Daily Care and Maintenance	30	
● Thorough Cleaning of the Product..	31	
● Other Care and Maintenance	34	
Preventing Damage Due to Frozen Water Pipes.....	38	Troubleshooting
● How to Prevent Damage (Pipe Drain Method)	38	
Troubleshooting	39	
Specifications	46	
Limited Warranty	47	

Important Safety Instructions

When using electrical products, especially when children are present, basic safety precautions should always be followed, including the following:

READ ALL INSTRUCTIONS BEFORE USING



DANGER

To reduce the risk of electrocution:

1. Do not use while bathing.
2. Do not place or store products where it can fall or be pulled into tub or sink.
3. Do not place in or drop into water or other liquid.
4. Do not reach for a product that has fallen into water. Unplug immediately.
5. Do not wash the main unit or power plug with water or detergent.
6. Do not handle the power plug with wet hands.
7. Discontinue use of a malfunctioning product.
 - If the following occurs, disconnect the power plug from the wall outlet, and turn the water shut off valve to prevent the flow of water.

Possible malfunctions:

- Water leaks from either the main unit or the water pipes.
- The product feels extremely hot.
- The product makes a strange noise or emits a strange odor.
- The product is cracked or broken.
- The product is smoking.

- Continued use of a malfunctioning product may result in fire or electrical shock or cause water damage.
8. Only use tap water or drinkable well water (ground water)
 - Use of water that is not safe for drinking may cause irritation or injury to the skin.
 9. Do not use a loose or faulty electrical outlet.
 10. This product should be used with 120V, 60Hz electrical current only.
 - Use of multi-prong outlet adapters with this product may result in overheating or fire.
 11. Avoid damaging the power plug or toilet seat cord.
 - Do not crack, bend, twist or pull the cords. Do not treat or heat the cords or place heavy objects on top of them.
 - Use of damaged power plug may result in a short circuit, electrical shock or fire.
 12. Improper use of heated toilet seats can result in a low-grade burn.
 - When sitting on the heated toilet seat for extended periods of time, turn the temperature setting to OFF.
 - Make sure that the temperature setting for the heated toilet seat has been set to the OFF position before being used by the following:
 - Young children, the aged or users who cannot perform appropriate setting of the temperature.
 - Sick or disabled users who do not have freedom of movement.
 - Users who are on medication that causes drowsiness.
 - Users that have consumed a great deal of alcohol or who are extremely tired and may fall asleep while using the toilet.



DANGER

To reduce the risk of electrocution:

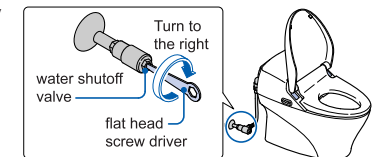
13. Periodically remove dust and dirt from the power plug and make sure they are tightly plugged into the wall outlet.
 - Failure to do so may result in electrical shock or fire.
 - Pull the plug out from the outlet and wipe clean with a dry cloth.
14. Do not unplug by pulling on cord. To unplug, grasp the plug, not the cord.
 - Pulling on the cord may cause damage and result in electrical shock or fire.



WARNING

To reduce the risk of burns, electrocution, fire or injury to persons:

1. Close supervision is necessary when this product is used by, on, or near children or invalids.
2. Use this product only for its intended use as described in this manual. Do not use attachments not recommended by the manufacturer.
3. Never operate this product if it has a damaged cord or plug, if it is not working properly, if it has been dropped or damaged, or dropped in water. Return the product to a service center for examination and repair.
4. Keep cord away from heated surfaces.
5. Never block the air openings of the product or place it on a soft surface, such as a bed or couch, where the air openings may be blocked. Keep the air openings free of lint, hair, and the like.
6. Never use while sleepy or drowsy.
7. Never drop or insert any object into any opening or hose.
8. Do not use outdoors or operate where aerosol (spray) products are being used or where oxygen is being administered.
9. Connect this product to a properly grounded outlet only. See Grounding Instructions.
10. Do not use this product while smoking.
11. Do not stand on or place heavy objects on top of the toilet.
 - To avoid injury or damage to the toilet unit, do not stand on or place heavy objects on top of the toilet.
12. Do not bend or crush the connection hose.
 - Bending or crushing the connection hose may result in water leakage.
13. Use only a mild dish detergent diluted with water to clean your NEOREST. Do not use the following to clean the NEOREST:
 - Toilet bowl cleaner, household cleaner, benzene, paint thinner, powdered cleanser, or nylon scrubbing pads.
 - Use of any cleaning product other than diluted dish detergent may crack the plastic and cause injury to the user or may damage the hose resulting in water leakage.
14. To prevent sudden water leakage, do not remove the water supply filter before. Refer to Page 34 for instructions on cleaning the water supply filter.
15. When installing the water supply filter, make sure that it is securely placed in its proper position.
 - Improper positioning of the water supply filter may result in water leakage.
16. If water leakage should occur, always turn the water shutoff valve and then turn off the water.





WARNING To reduce the risk of burns, electrocution, fire or injury to persons:

17. Always use the NEOREST at a room temperature of 32°F (freezing temperature) or above to prevent frozen pipes and hoses.
- Frozen water pipes will cause the toilet and the pipes to break resulting in water leakage. Refer to Page 38 for instructions on how to prevent frozen pipes.



GROUNDING INSTRUCTIONS

This product should be grounded. In the event of an electrical short circuit, grounding reduces the risk of electric shock by providing an escape wire for the electrical current. This product is equipped with a cord having a grounding wire with a grounding plug. The plug must be plugged into an outlet that is properly installed and grounded.



DANGER Improper use of the grounding plug can result in a risk of electric shock.

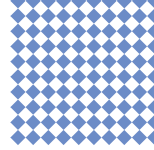
If repair or replacement of the cord or plug is necessary, do not connect the grounding wire to either flat blade terminal. The wire insulation having an outer surface that is green with or without yellow stripes is the grounding wire.

Check with a qualified electrician or serviceman if the grounding wire instructions are not completely understood, or if in doubt as to whether the product is properly grounded.

This product is factory equipped with a specific electric cord and plug to permit connection to a proper electric circuit. Make sure that the product is connected to an outlet having the same configuration as the plug. No adapter should be used with this product. Do not modify the plug provided - if it will not fit in the outlet, have the proper outlet installed by a qualified electrician. If the product must be reconnected for use on a different type of electric circuit, the reconnection should be made by qualified service personnel.

If it is necessary to use an extension cord, use only a three wire extension cord that has a three blade grounding plug, and a three-slot receptacle that will accept the plug on the product. Replace or repair a damaged cord.

Save these instructions.



Operational Instructions

Always follow these precautions to ensure the safe use of your product.

Do not wipe the toilet unit or seat with a dry cloth or toilet paper.

- Use of a dry cloth or toilet paper to wipe the toilet bowl, seat or lid will scratch the surface.

Refer to Page 29 for instructions on how to care for your Washlet.

Do not expose the NEOREST to direct sunlight.

- Use of the product under direct sunlight may result in discoloration of the plastic, inconsistent temperature control of the toilet seat or malfunction of the remote controller.

Avoid getting urine on the main unit or wand as this may result in malfunction of the product.

Do not cover the seat sensor, motion detection sensor or remote control transmitter.

- Covering the sensors or remote control transmitter will prevent them from working properly.

Do not lean back against the lid.

- Leaning against the lid may damage or break it.

To avoid electrical damage to your unit, be sure to unplug the power cord during lightning storms.

Do not use the NEOREST near radios and stereo equipment.

- Use of the NEOREST near a radio, etc. will cause electrical interference.

When not in use over extended periods of time, remove the power plug from the wall outlet.

- However, when being used at a room temperature of less than 32° F (below freezing), be sure to keep the unit plugged in to prevent freezing of the pipes and hoses.

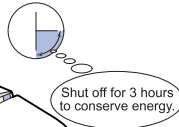
When restarting after extended disuse, let water run for a few minutes before using.

Tips for Using the NEOREST 600

Protect the environment and reduce the use of electricity.

Use the timer and save energy.

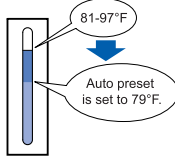
Set the timer so that it shuts off the toilet seat heater each day at the same time to save energy. The shutoff time can be set for 3, 6 and 9 hours. See page 23.



TIMER lamp is set.

Use the Auto Energy Saver.

Use the Auto Energy Saver to automatically reduce the toilet seat temperature when the toilet is not being used. See page 25.

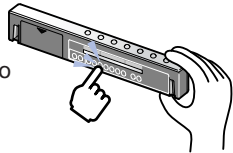


AUTO lamp is set.

The "TIMER ON/OFF" and "AUTO ON/OFF" can be used together to save even more energy!

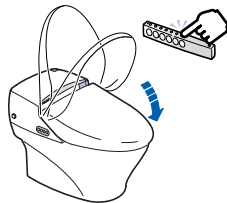
Reduce the temperature setting to save energy.

The toilet seat temperature can be reduced to a comfortable setting to save energy. See page 15.



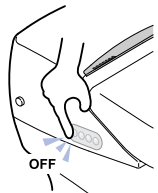
Keep the lid closed to keep the toilet seat warm and conserve energy.

Keeping the lid closed will help maintain the warmth of the toilet seat.



Turn the power switch to OFF when the Washlet is not being used over extended periods of time.

Turn the power switch off when leaving the house to conserve energy. See page 12.



Performance Features

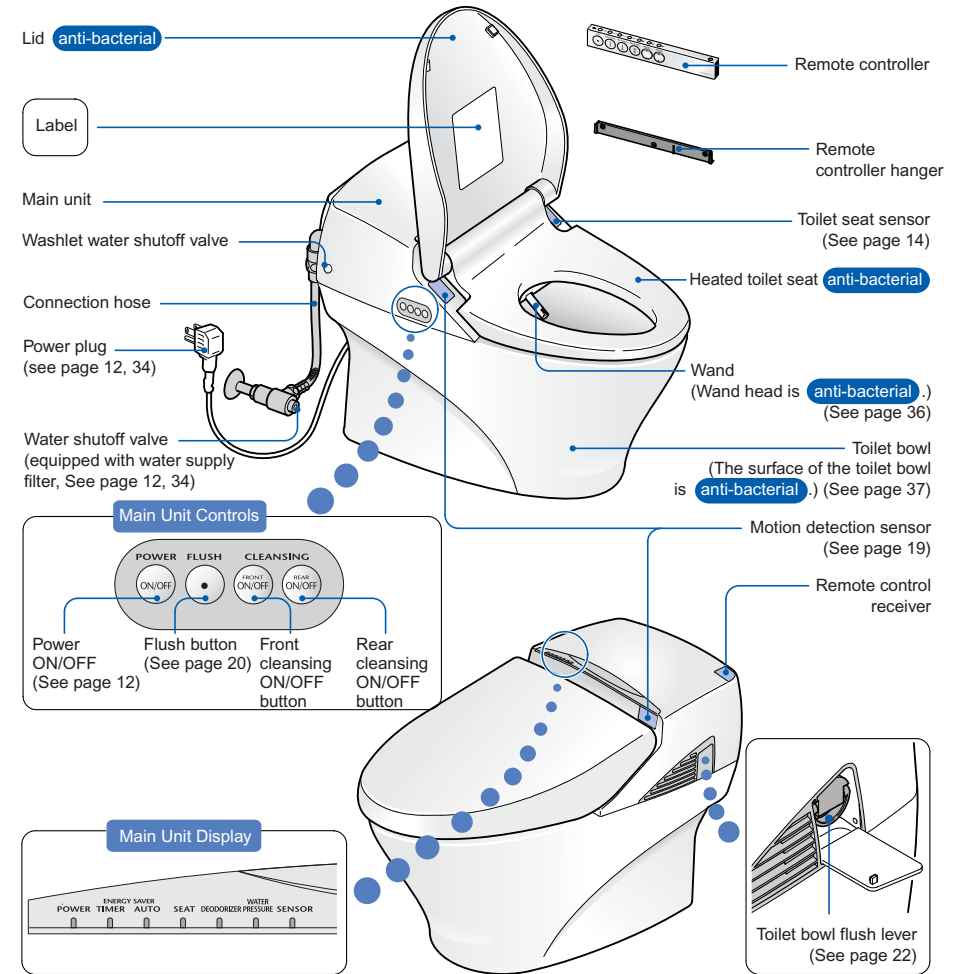
Washing Functions		Page
Rear cleansing	<ul style="list-style-type: none"> The Pulsating wash alternates cycles strong and soft sprays of water approximately 70 times per second for a very thorough rear wash. Rear washing performance has been improved. The soft wash and Front features provide a soft, yet thorough, whirling flow of water. 	13
Soft rear cleansing		
Front cleansing		
Wash position adjustment	<ul style="list-style-type: none"> The wand can be adjusted forward or backward. 	13
Water pressure adjustment	<ul style="list-style-type: none"> The water pressure can be adjusted to soft or strong. 	13
Oscillating wash	<ul style="list-style-type: none"> The Wand moves back and forth for a wide-range, thorough wash. 	13
Pulsating wash	<ul style="list-style-type: none"> A combination of soft/strong water pressure is used to wash. 	13

Amenities		Page
Heated toilet seat	<ul style="list-style-type: none"> Warms the toilet seat. 	—
Warm air drying	<ul style="list-style-type: none"> Dries wet portions with warm air. 	14
Temperature adjustment	<ul style="list-style-type: none"> Adjusts the temperature of the water, toilet seat and warm air dryer. 	15
Deodorizer	<ul style="list-style-type: none"> Removes toilet bowl odor. 	16
Remote controller	<ul style="list-style-type: none"> Allows for easy operation while on the toilet seat. 	10
Seat sensor	<ul style="list-style-type: none"> The sensor detects when someone sits on the toilet seat and activates all of the functions. 	14
Remote controlled toilet seat and lid	<ul style="list-style-type: none"> Raises and lowers the toilet seat and lid. 	17
Auto open/close	<ul style="list-style-type: none"> The sensor works as a motion detector and automatically opens/closes the lid. 	17-19
Remote controlled flush	<ul style="list-style-type: none"> Flushes the toilet via remote control. 	20
Automatic flush	<ul style="list-style-type: none"> Automatically flushes the toilet when you get off the toilet seat. 	21, 22

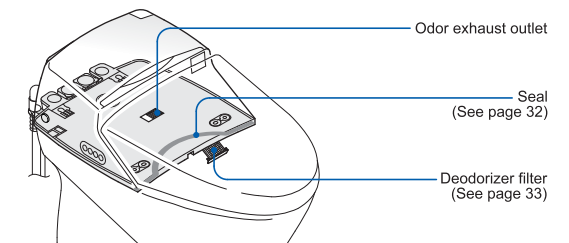
Energy Saving Features		Page
Timer ON/OFF	<ul style="list-style-type: none"> Conserve energy by pre-setting the timer to turn off the toilet seat heater for the same time period each day. (Can be set for 3, 6 or 9 hour periods of time). 	23, 24
Auto ON/OFF	<ul style="list-style-type: none"> The unit memorizes the time of day at which the toilet is least used and automatically reduces the toilet seat temperature to conserve energy. 	25-27
ON/OFF Button	<ul style="list-style-type: none"> Turn the button to the OFF position to stop warming the toilet seat and conserve energy. 	12

Sanitary Features		Page
Removable toilet seat and lid	<ul style="list-style-type: none"> The toilet seat and lid can be removed for easy cleaning. 	31, 32
Self Cleaning	<ul style="list-style-type: none"> The wand tip is washed before and after each use. 	—
Wand Cleaning	<ul style="list-style-type: none"> The entire wand is thoroughly washed when it is extended for use and before it is stored. 	—
Wand cleaning button	<ul style="list-style-type: none"> Used to switch off the water from the wand when cleaning it. 	36
Rinse Cycle	<ul style="list-style-type: none"> Discharges water inside the toilet bowl during cleaning. Automatic dual mode bowl cleaning. 	37
Easy-to-clean toilet bowl	<ul style="list-style-type: none"> "SanaGloss" finish protects the toilet bowl from staining and makes it easier to clean. 	—
Protective seal	<ul style="list-style-type: none"> The gap between the main unit and the toilet bowl is filled with a seal to prevent water entering the unit. 	32

Parts and Features

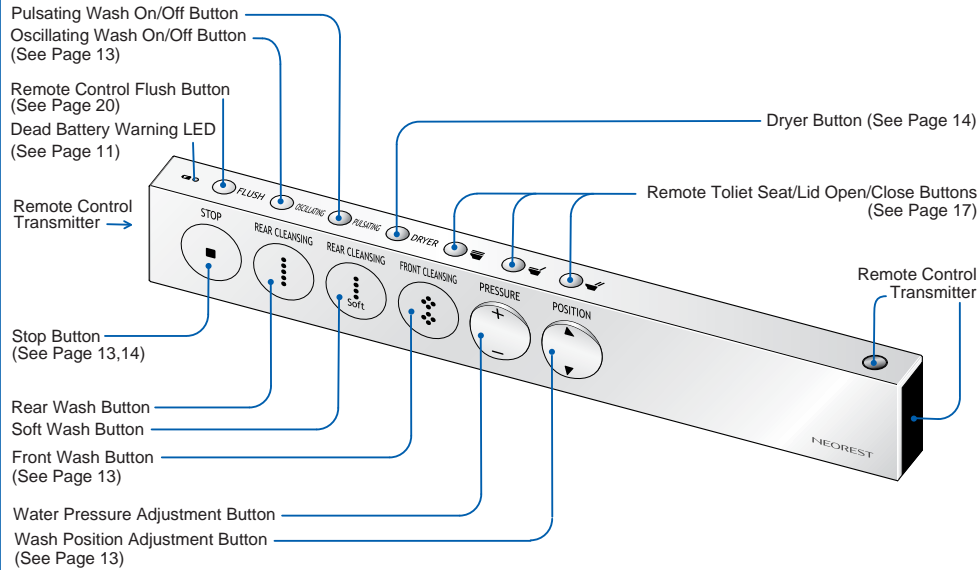


Bottom of Main Unit

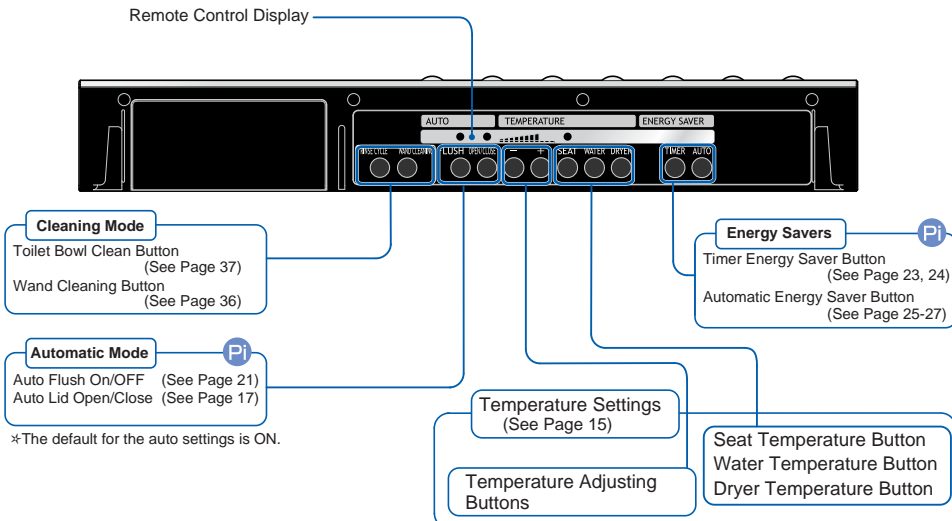


Remote Controller

Front

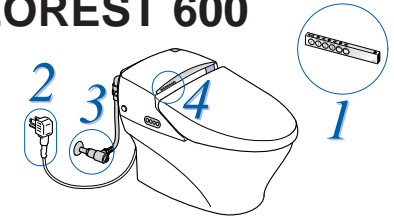


Back



Pi Unit beeps when main unit receives a signal from the remote control.

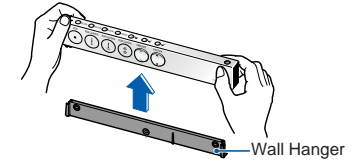
Before Using the NEOREST 600



Preparations

1 Insert batteries into the remote controller.

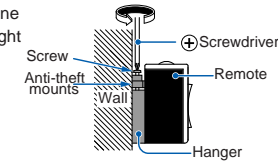
- Remove the remote control from the wall hanger.
 - Grasp the sides of the remote with both hands and lift straight up.



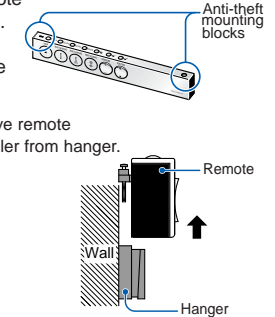
If you are using the anti-theft mounts

Loosen the screws on the anti-theft mounts and remove the remote controller. When returning, remember to fully tighten the screws.
*Use a small philips head screwdriver
*Do not over tighten the screws as this may damage the remote controller.

- Loosen the mounting screws with a philips head screwdriver (one mount on left and right of remote).



- Remove remote controller from hanger.

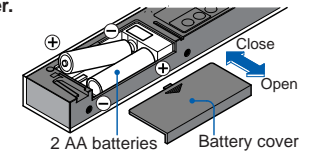


2 Remove the battery cover on the back of the remote controller.

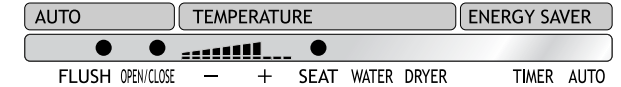
3 Insert 2 AA batteries

4 Replace battery cover.

- If the batteries have been installed correctly, the display on the back of the remote should look like the following illustration.

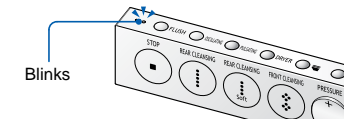


Remote Control Display



Batteries

- Please observe the following to keep batteries from rupturing or leaking.
 - Always use new versions of the same battery type.
 - Remove the batteries when not using the unit for a long period of time.
 - Do not use rechargeable batteries.
- Time to replace batteries.
As the batteries wear down, the dead battery indicator light on the remote controller will begin blinking. Change the batteries at that time.

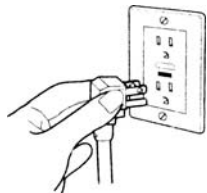


Tip 1

- Turn the main Neorest unit to "OFF" when changing batteries or doing maintenance.
- When changing the batteries, some features such as the "Timer Energy Saver" function may be switched off. Reapply your settings after completion.
- When changing the batteries, the "Dead Battery" light may glow for approximately 2 seconds. This is normal.

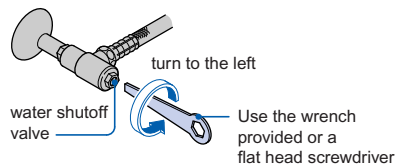
2 Insert the plug into the wall outlet.

- Connect the power cord to a 120V (60 Hz) GFCI protected power outlet.



3 Open the water shutoff valve.

- Use the wrench provided or a flat head screwdriver to open the water shutoff valve.

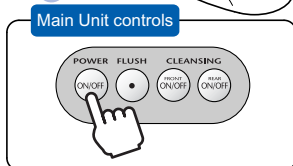
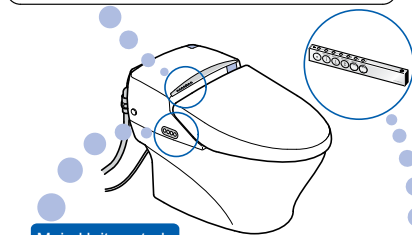
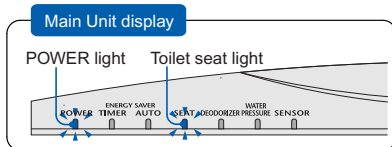


4 Check the [Main Unit Display].

- Is the "POWER" light on the Main Unit display ON?



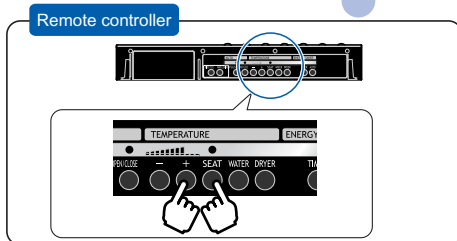
If the light is not ON, push the "POWER" button on the main unit to turn the light on.



- Is the toilet seat light on the Main Unit display ON?



If the light is not ON, push the toilet seat temperature adjustment button ON to turn the light on.



How to Use the NEOREST 600

1 When you stand at a distance of approximately 1 foot from the front of the Neorest, the lid will automatically open.

(Auto Open/Close, See page 17,18)

2 Sit on the seat

Functions become available when the seat sensor is activated.

- In preparation for wash, water is released from the wand.
- Deodorizer starts automatically.

3 Wash

Water Pressure Adjustment Button

The water pressure can be adjusted to any of 7 levels. Pressing the + button increases the pressure, while pressing the - button decreases the pressure.

* When adjustments are made using the button, the pressure returns to the default pressure (level 4) after 5 minutes. See page 14 about keeping the water pressure at your preferred setting.

Wand Position Adjustment Button

The wash position can be moved to one of 5 positions. Pressing the button will move the wand forward, while the button moves it back.

* When adjustments are made using the button, the wand returns to the default position (position 3) after 5 minutes. See page 14 about keeping the position at your preferred setting.

Stop Button

Stops rear wash, soft wash, front wash and dryer.

Amenity Feature 1 Amenity Feature 2

Rear Wash Button

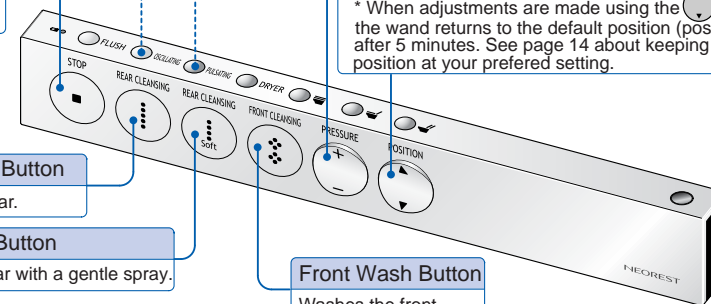
Washes the rear.

Soft Wash Button

Washes the rear with a gentle spray.

Front Wash Button

Washes the front.



For Better Results:

Amenity Feature 1: Oscillating

The wand moves back and forth for a wide-range, thorough wash.

- REAR CLEANSING (Soft) REAR CLEANSING (Oscillating) FRONT CLEANSING Press button for desired function.

- OSCILLATING Push the "Oscillating" button to activate the "Oscillating" function.

- OSCILLATING Push the "Oscillating" button again to turn off the "Oscillating" function.

Amenity Feature 2: Pulsating

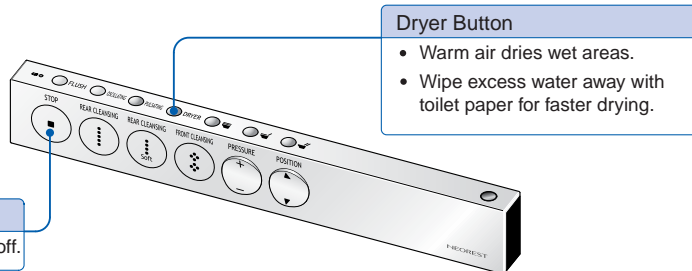
Alternates from hard to soft water pressures.

- REAR CLEANSING (Soft) REAR CLEANSING (Pulsating) FRONT CLEANSING Press button for desired function.

- PULSATING Push the "Pulsating" button to activate the "Pulsating" function.

- PULSATING Push the "Pulsating" button again to turn off the "Pulsating" function.

4 Dryer



5 Stand up from the toilet seat

- The Deodorizer is automatically shut off after 1 minute.

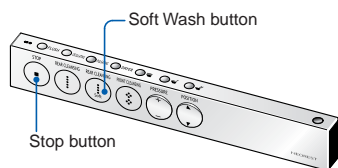
6 Move away from the toilet

- ➔ After approximately 3 seconds, the Neorest will automatically flush. (See page 21)
 - Or, use the "flush" button on the remote or side control.
- ➔ After approximately 90 seconds, the lid and seat (if up) will close. (See page 18)
 - Or use seat and lid close button on the remote. (See page 17)

When you want to keep remote setting at a particular level

- Use this procedure when you would like to keep the water pressure or wand position at the same setting from use to use.

- 1 Hold down the for 10 seconds or more.
 - The entire remote control display will blink.
- 2 Press the button for 5 or more seconds.
 - There will be a beep from the main unit.
- 3 Press the button once again.



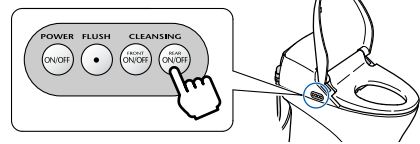
Seat Sensor

- The seat sensor senses when someone is seated.
- An infrared beam is emitted by the seat sensor, as shown in the diagram.
- Depending on how or where the toilet is used, the seat sensor may have difficulty functioning. (See page 44)



If the batteries in the remote give out

- Use the main unit controls to wash.



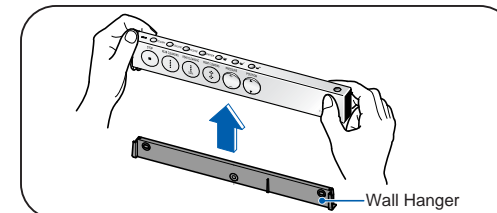
For Best Results

Adjusting the Temperature

- Use the remote controller to adjust the water temperature, toilet seat temperature or dryer heat to the desired setting.

1 Remove the remote control from the hanger.

- See page 11, if you have installed the theft prevention mounting blocks.



2 Press the temperature button on the back of the remote.

- Please press one of the following temperature SEAT WATER DRYER buttons.

A ● will be displayed on the remote display and the current setting (step) can be verified.

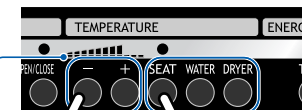
3 Press the buttons until the desired temperature has been reached.

- Please adjust the temperature of the water and the toilet seat with the buttons.
- If turning the feature "Off", keep pressing the button until the temperature display goes out.
- The dryer can be adjusted to one of 5 settings by using the buttons.

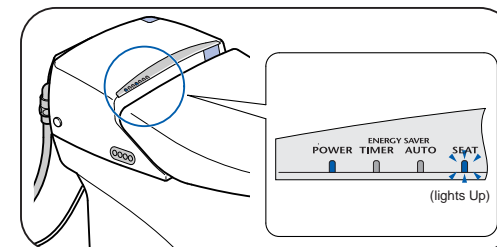
- When the toilet seat heater is "on", the "Seat" LED light on main unit display will turn on.

Example : Adjusting the Toilet Seat Temperature

Back of the Remote Controller



Temperature Buttons
Toilet Seat Temperature (11 settings and Off)
Water Temperature (11 settings and Off)
Dryer Temperature (5 settings)

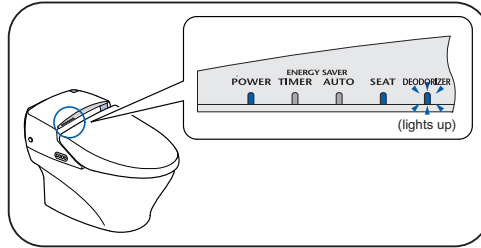


Deodorizing

1 Sit on the toilet seat

The deodorizer function automatically starts.

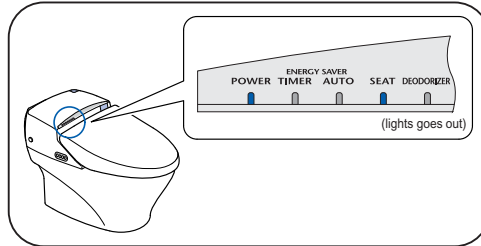
- The "DEODORIZER" light on the main unit display lights up.



2 Move away from the toilet seat

The deodorizer function automatically stops after 1 minute.

- The "DEODORIZER" light on the main unit display goes out.



Opening and Closing the Toilet Seat and Lid

There are two ways to open and close the toilet seat and lid. The remote control method and the automatic method.



Remote Controlled Opening/Closing of Toilet Seat and Lid

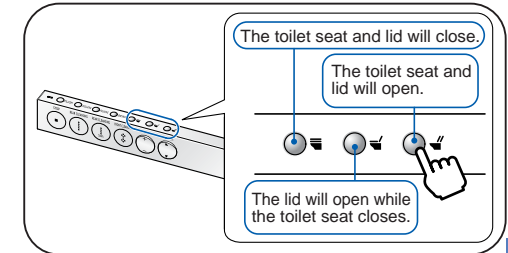
- The toilet seat and lid can be opened and closed by pushing the desired button on the remote controller.

Tip 1

Push the desired button on the remote controller.



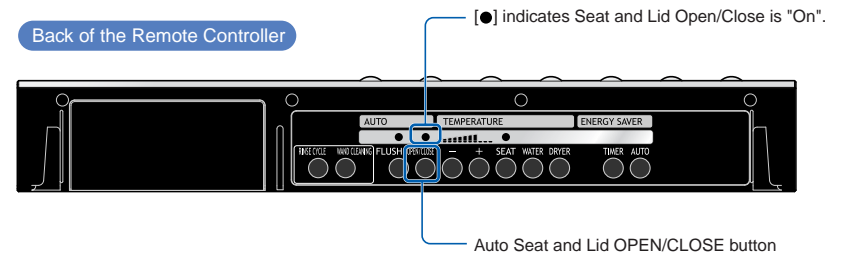
The toilet seat and lid will open or close



Automatic Opening/Closing of Toilet Seat and Lid

- When you stand in front of the toilet, the lid automatically opens. When you move away from the toilet, the seat and lid automatically close. If the lid is closed either manually or via the remote control, it will not automatically reopen for 10 seconds. (The lid is programmed to not repeatedly open and close.)

- check** Confirm that the Seat and Lid Open/Close display on the back of the remote controller is "On".



Tip 1

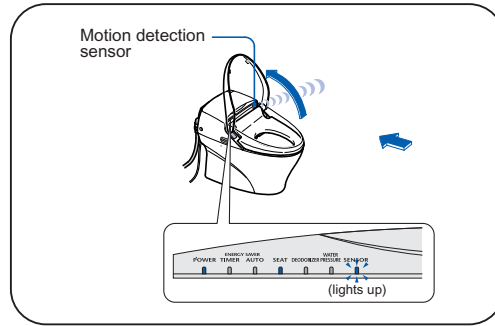
In the event of power outages or when the remote controller batteries need replacing, manually open and close the toilet seat and lid by hand.

1 Stand in front of the toilet.

The Lid automatically opens

If the lid does not open, move at least 1 foot away from the toilet, wait 10 seconds, and then stand in front of the toilet again. The lid will automatically open. **Tip 1**

- When the motion detection sensor detects motion, the "sensor" light on the main unit display will light up.
- The motion detection sensor detects motion and the lid opens automatically.



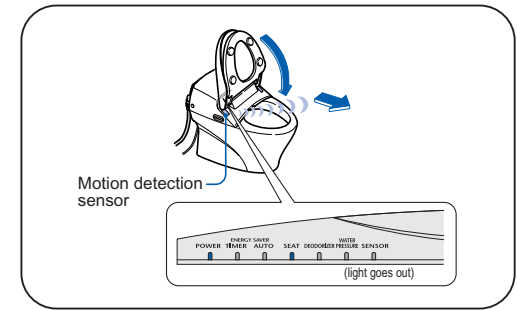
When Standing in Front of the Toilet

- Raise the toilet seat with the remote controller. You must stand in front of the toilet for at least 6 seconds or the lid will not automatically close.

After using the toilet, move at least 1 foot away from the toilet.

The toilet seat and lid will automatically close after 90 seconds.

- When the motion detection sensor fails to detect motion, the "sensor" light on the main unit display will go out.



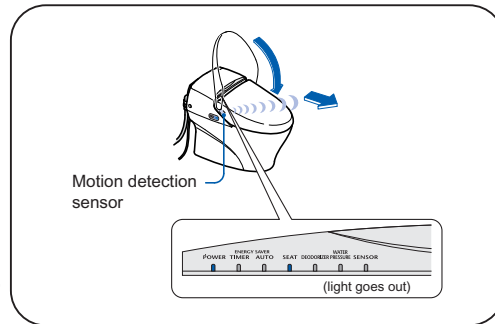
When Sitting on the Toilet Seat

- When raised with the remote controller and you do not sit on the toilet seat for at least 6 seconds, the lid will not automatically close.

After using the toilet, move at least 1 foot away from the toilet.

The lid will automatically close after 90 seconds.

- When the motion detection sensor fails to detect motion, the "sensor" light on the main unit display will go out.

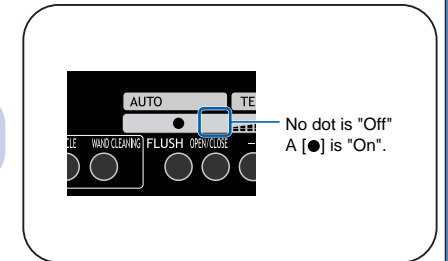


To turn off the Auto OPEN/CLOSE function

Push the desired button on the remote controller

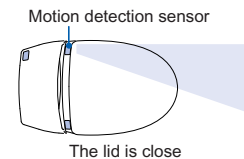
Push the Auto OPEN/CLOSE button on the remote controller to stop the Auto OPEN/CLOSE.

- The "●" will disappear from the remote control display.
- To turn the "●" on again, repeat this operation.

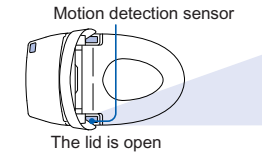


About the Motion detection sensor:

- The Motion detection sensor detects when someone stands in front of the toilet.
- The Motion detection sensor projects an infrared light as shown in the figure below. When someone stands in line with the infrared light, movement is detected by the sensor.



The lid is close



The lid is open

Tip 1

- Initially, "Auto Open/Close" has been set at "On".
- When a child uses the toilet, the sensor may not detect anything depending on the standing position, height etc. In this case, use the remote control to open/close the lid.

Flushing

There are 2 settings for flushing water. The remote controlled setting and the auto setting.

Remote Controlled Flushing

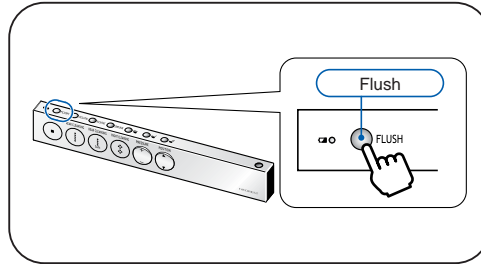
- The toilet can be flushed by pushing the flush button on the remote controller.

Tip 1

Push the flush button on the remote controller.

FLUSH

The toilet bowl is flushed.
1.6 Gallons per Flush (6 LPF)

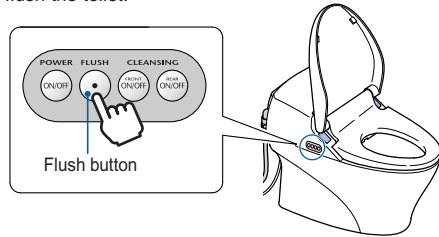


If the remote controller batteries need replacing

- Use the flush button located on the main unit controls to flush the toilet.

Push the flush button on the main unit controls.

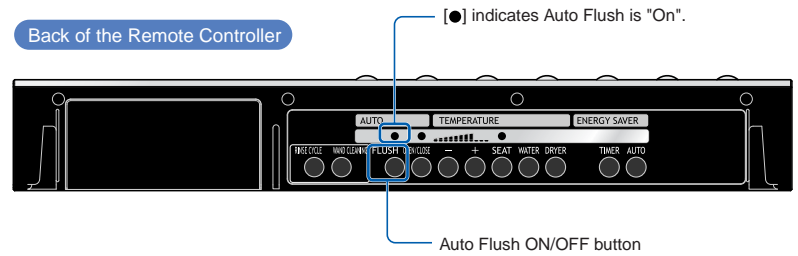
The toilet bowl is flushed.
1.6 Gallons per Flush (6 LPF)



Automatic Flushing

- The toilet will automatically flush when the user moves away from the toilet. (This function prevents the toilet bowl from being left unflushed.)

▶ **check** Confirm that the Auto Flush display on the back of the remote controller is "On".



When sitting on the toilet seat

- You must sit on the toilet seat for at least 6 seconds in order to activate the automatic flush function.

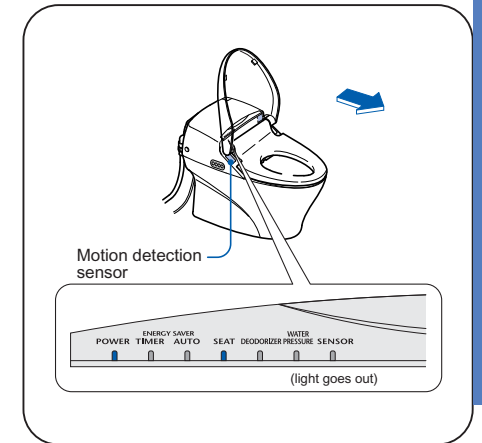
When finished, move away from the toilet (more than one foot).

After 3 seconds the toilet will automatically flush.

Tip 2

- When the motion detection sensor does not detect motion near the toilet, the sensor light located on the main unit control goes out.

1.6 Gallons per Flush (6 LPF)



Tip 1 The toilet bowl flush button cannot be pushed repeatedly. Wait 10 seconds before pushing the button again.

Tip 2

- The default setting for the Auto flush is ON.
- Even while seated, the sensor may fail to detect the user and "Auto Flush" depending on the user's sitting position.

When standing in front of the toilet

- You must stand in front of the toilet for at least 6 seconds in order to activate the automatic flush function.

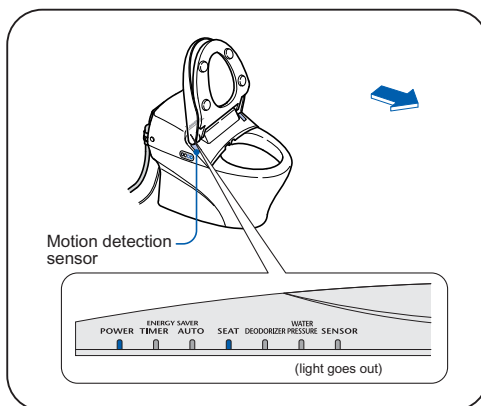
1.2 Gallon light flush (4.5 LPF)

When finished, move away from the toilet (more than one foot).

After 3 seconds the toilet will automatically flush.

Tip 1

- When the sensor does not detect motion near the toilet, the motion detection sensor light located on the main unit control goes out.
- Light flush only activates when sensor detects someone standing in front of unit for 6 seconds and seat and lid are both raised.

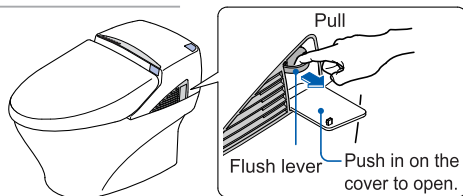


Flushing the toilet during a power outage

- Pull out the flush lever located on the side of the toilet bowl.

Pull out the flush lever

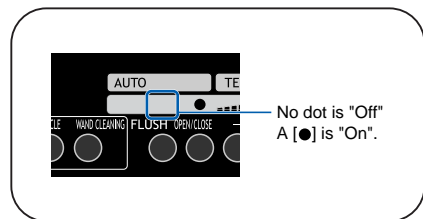
The toilet bowl is flushed.
1.6 Gallons per Flush (6 LPF)



To turn off the Auto Flush function

Push the Auto Flush button on the remote controller to deactivate the Auto Flush

- The "●" will disappear from the remote control display.
- To turn the "●" on again, repeat this operation.



Tip 1

When a child uses the toilet, the sensor may not detect anything and "Auto Flush" may not work depending on the standing position, height etc.

To Conserve Energy

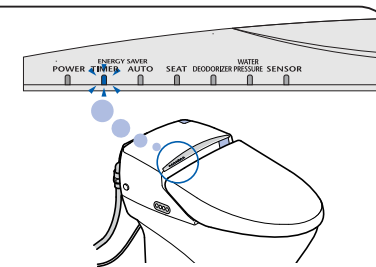
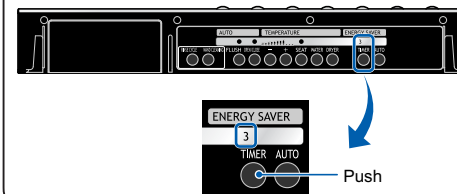
Using the Energy Saver Feature - "TIMER ON/OFF"

You can set your Neorest to turn off the seat heater to save energy by pressing the "TIMER ON/OFF" button. The heater turns off for 3, 6 or 9 hours to save energy. Each day afterwards, the Neorest automatically goes into Energy Saver mode at the same time.

1 Press the "Timer" button on the remote controller at the time you want the Energy Saver feature to begin operating.

- "3" appear in the remote control display, and a beep sounds.
- The "Energy Saver - Timer" lamp in the main unit display lights.
- The seat heater turns off and energy saving starts.

Back of the Remote Controller



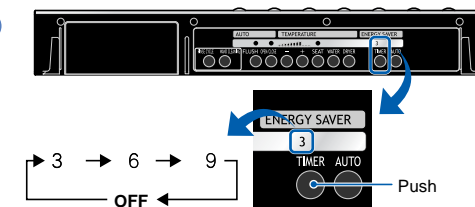
Notes

- The saving time is initially set for 3 hours.
- When batteries for the remote controller are replaced, the settings will be cleared. Reset the settings.
- When you expect freezing temperatures, keep the room warm so that the room temperature does not fall below freezing, and turn off the Energy Saver feature.
- In case the power cord is disconnected or a power failure occurs, the timer may not operate as originally set starting on the following day.

2 Press the "TIMER ON/OFF" button repeatedly to set the duration.

- Every time you press "TIMER ON/OFF", the display changes.
- Select the duration you want to set.

Back of the Remote Controller



Notes

- You can always change the energy saving duration without changing the energy saving start time.
- If you wish to change the energy saving start time, turn off the energy saving timer and press the "Timer ON/OFF" button again at the new time.

* Example

When you want to save energy for 6 hours between 0:00 a.m. and 6:00 a.m. (while your family is sleeping), press the “Timer” button at midnight.

- The energy saving starts automatically at the same time and duration on every following day.

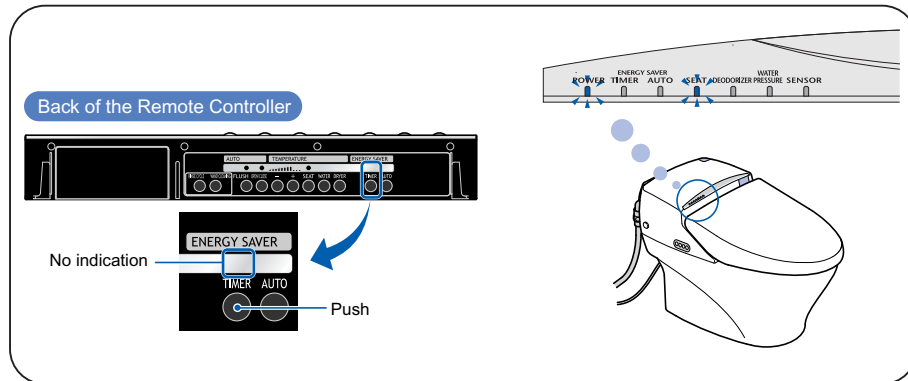
Note

- When the toilet seat is occupied during energy saving mode, the seat heater temporarily turns on. At this time, the green "Power" lamp lights.
- It takes about 15 minutes for the seat to warm up.

Shutting Off Energy Saver Feature - “Timer ON/OFF”

Press the “Timer ON/OFF” button on the remote controller until “Saving Time” indicators in the remote control display go out.

- The green “Power” lamp and the green “Seat” lamp on the main unit display light.
- The seat heater turns on and energy saving stops.

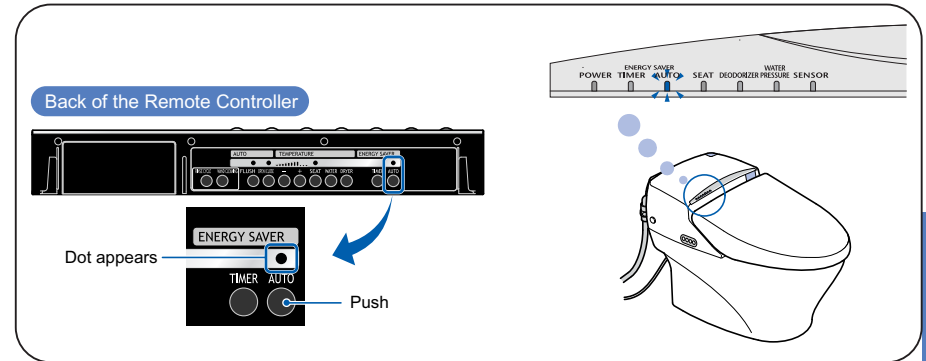


Using the Energy Saver - “AUTO ON/OFF”

The Neorest can be set to remember the times of day that you normally use the toilet, and will automatically lower the temperature of the toilet seat to save energy when you do not expect to use the toilet.

Press the “AUTO ON/OFF” button on the remote controller.

- “●” appears in the remote control display.
- The “Energy Saver - Auto” lamp in the main unit display lights.
- The main unit accepts the operation, and a beep sounds.

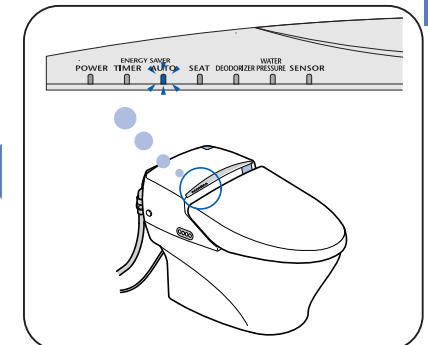


The Neorest begins to detect the time periods during which the toilet is not used often. (See Note).

Note

- The seat temperature is set to about 79°F (26°C) while in Auto energy-saving mode; the seat will begin to warm up when someone sits on it.
- During time periods when the toilet is not used much, the orange “Energy Saver - Auto” lamp on the main unit lights.

The temperature of the seat is automatically lowered, and the energy-saving mode begins operating.



Notes

Precaution concerning the Energy Saver:

- It takes the Neorest two or three days to establish during which time periods the toilet is not used often. During that time, the energy-saving mode will go into effect gradually.

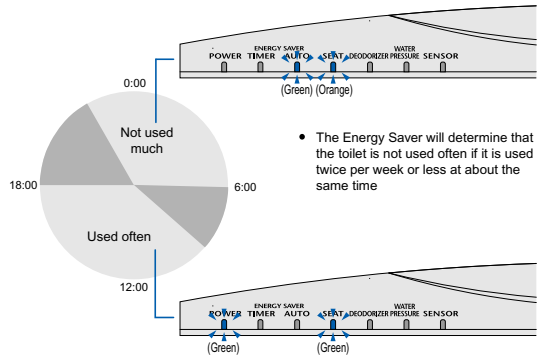
When replacing the batteries of the remote control:

- The energy-saving settings will disappear and must be re-entered.

When the power is switched off, or if there is a power outage:

- The Energy Saver sometimes does not operate correctly when this happens, but it will begin operating correctly again on the following day.
- If the three-prong plug is unplugged when the Neorest is not used for a long time, it will operate in the same way.

Here's one way you can save energy

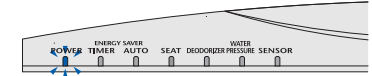
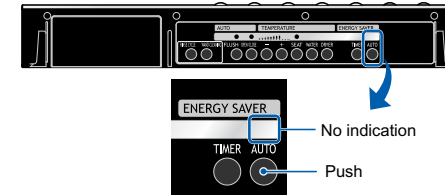


Shutting Off the Energy Saver Feature - "AUTO ON/OFF"

Press the Energy Saver button on the remote controller.

- "●" disappears from the remote control display.
- The main unit accepts the operation, and a beep sounds.
- The green "Power" lamp on the main unit lights.

Back of the Remote Controller



The Energy Saver shuts off

The NEOREST can be used even during Energy Saving mode.

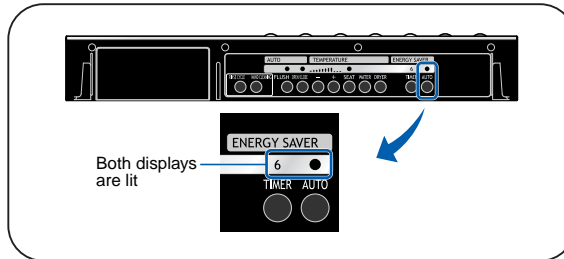
- If you sit on the seat when it is in Energy Saving mode, the seat will warm up. When this occurs, the green "Power" lamp will come on.
- The seat will take about 5 minutes to get warm.

If You Are Using the “TIMER ON/OFF” and the “AUTO ON/OFF” Features at the Same Time

1 Press the “TIMER ON/OFF” button on the remote controller when you want to begin saving energy.

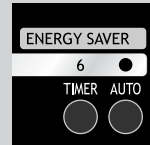
Note: For more details, see “TIMER ON/OFF” on page 23.

2 Next, press the “AUTO ON/OFF” button. (See note.)



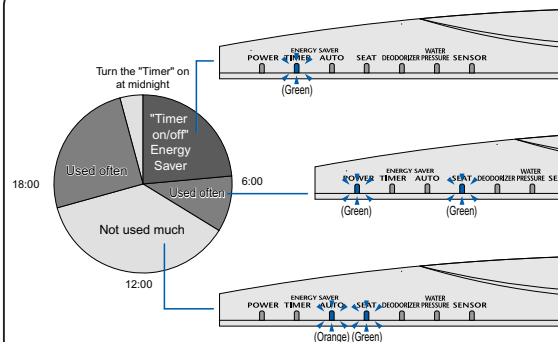
Notes

- When you are using both, the remote control display will look as follows:



- One of a Saving Time of 3, 6, or 9 hours will display.

Here's one way you can save energy



- It does not matter in which order you push the “TIMER ON/OFF” and “AUTO ON/OFF” buttons: “TIMER ON/OFF” first, the “AUTO ON/OFF” or vice-versa.
- During the time that the “TIMER ON/OFF” is not operating, the “AUTO ON/OFF” operates and helps you save energy when the Neorest is not used often.

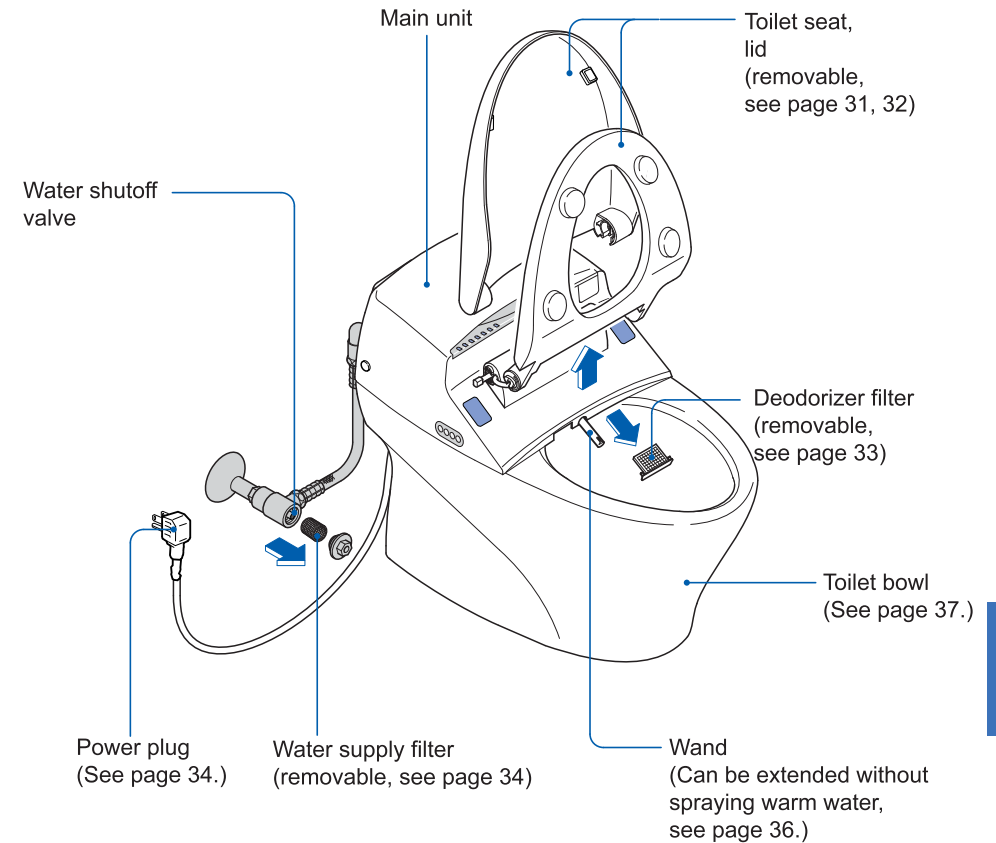
Caring for your NEOREST 600

Before Cleaning the NEOREST

Each component can be disassembled for a thorough cleaning.

Caution!

Be sure to turn off the Auto Lid OPEN/CLOSE and Auto Flush buttons before cleaning the unit.



Daily Care and Maintenance

Cleaning the main unit, toilet seat and lid.

Wipe the components with a soft damp cloth.

- Wet and wring out a soft cloth for wiping the surface of the components. **Tip** 1, 2

Cleaning very dirty components.

- Wet a soft cloth with diluted dish detergent wipe down the component surfaces.
- Then wipe off the detergent solution with a damp cloth.

If toilet bowl cleaner gets on the plastic components.

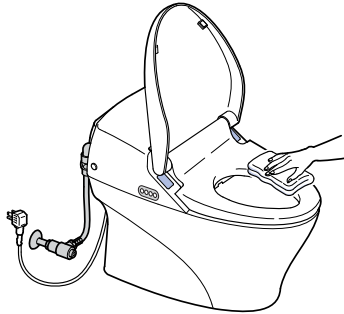
- Wipe down the component surface with a wet cloth and wipe dry.

Cleaning the Remote Controller

- Any water or detergent should be quickly removed from the surface of the remote controller by using a soft cloth or color change may result.

Cleaning the Floor

- Using a damp cloth, wipe off urine which has stained the toilet and the floor.
- When cleaning, also wipe off detergent and moisture completely from the floor.



Tip 1

- Do not use a dry cloth or toilet tissue to wipe plastic components as this may scratch the surfaces.
- Be careful not to get water on the electrical components. Always wipe up any excess detergent and water that gets into crevices.

Tip 2

- Always keep the toilet seat sensor, motion detection sensor and remote control receiver free from dust and dirt to ensure optimum operation. (See page 14, 19, 39-45.)

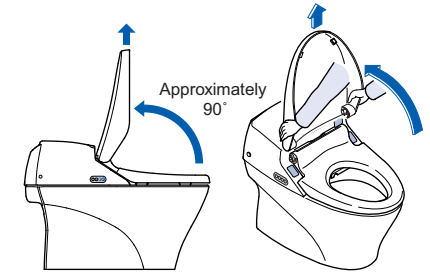
Thorough Cleaning of the Product

Cleaning the main unit, toilet seat and lid.

- Each component can be disassembled for a thorough cleaning.

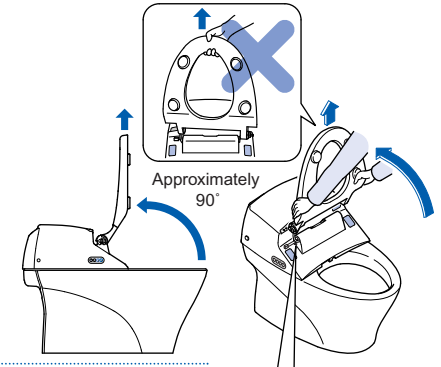
1 Remove the lid.

- Open the lid at a 90° angle, grasp with both hands and lift straight up.



2 Remove the toilet seat

- Open the toilet seat at a 90° angle, grasp with both hands and lift straight up.
- * The toilet seat cord cannot be removed.
- * The toilet seat cord can only be extended about 2 inches. Do not pull on the seat cord as it may damage the cord.
- * The toilet seat should only be removed at a 90° angle. Do not apply force to pull up on the seat as this may cause it to break.




- After removing the toilet seat, place it on top of the toilet bowl for cleaning.

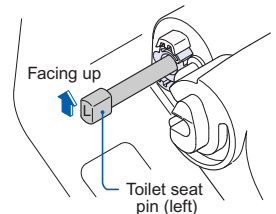


3 Clean the components

- Refer to the "Daily Care and Maintenance" instructions on page 30.

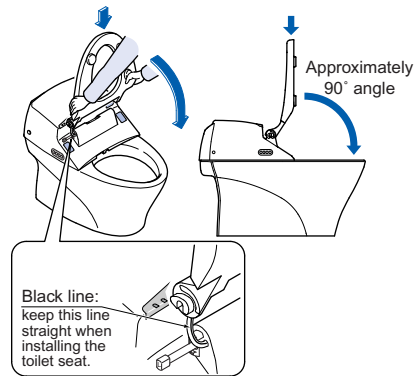
4 Make certain that the toilet seat pins are facing up. (Both right and left pins.)

- If the toilet seat pins are not facing up, push the  button on the remote controller.



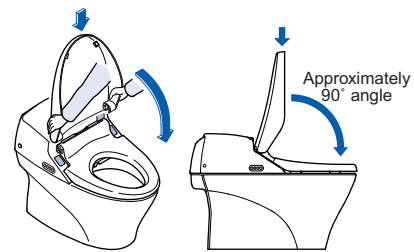
5 Reattach the toilet seat

- Grasp the toilet seat with both hands, making sure to keep the black line on the seat cord straight.
- Insert the toilet seat straight into the seat pins.
- Lower the toilet seat.
- * Be careful not to get the seat cord twisted when installing the toilet seat.
- * Do not install the seat at an angle or use force when pushing down on it.



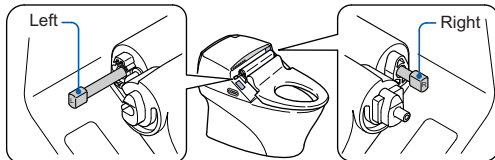
6 Reattach the lid

- Grasp the lid with both hands and insert straight down into the toilet seat pins.
- Lower the lid.
- * Do not install the lid at an angle or use force when pushing down on it.



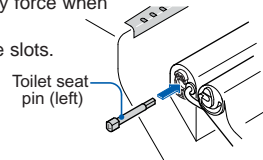
If the toilet seat pins come out:

1. Check the toilet seat pin tips for "right" and "left" markings to ensure proper installation.



2. Insert the right and left pins all the way into the respective slots.

- * Do not apply force when pushing the pins into the slots.

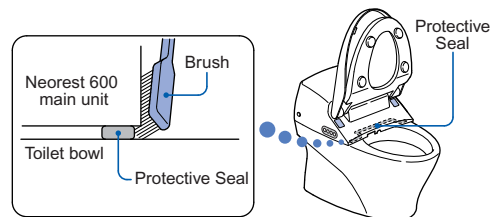


Cleaning crevices between the main unit and the toilet bowl.

(Perform once a week.)

- Perform routine cleaning of the crevices to prevent water and dirt from getting into the seal.

Clean the crevices with a small brush.



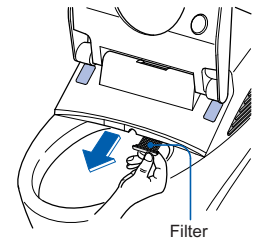
Cleaning the deodorizer filter.

(Filter should be cleaned once a month.)

- Follow the steps below to remove dust from the filter.

1 Remove the deodorizer filter.

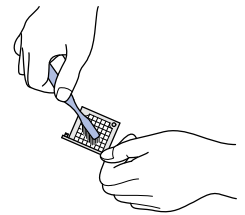
- Pull the filter (gray) forward.



2 Clean the deodorizer filter

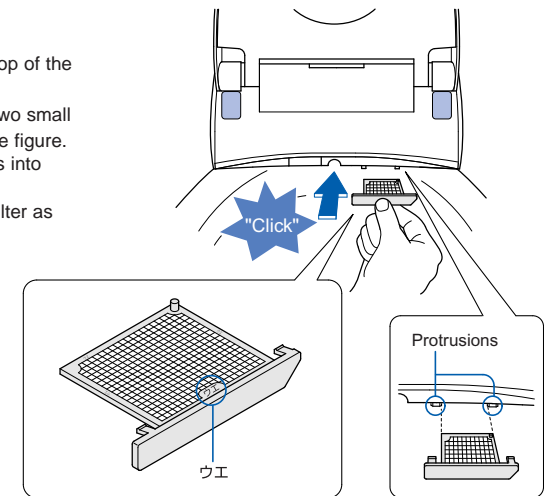
- Brush the dust off of the filter surface with a small brush, such as a toothbrush.

Tip 1



3 Reinstall the deodorizer filter

- Look for the "ウエ" markings on the top of the filter.
- Insert the filter into the unit using the two small protrusions as a guide, as shown in the figure. Push the filter into the slot until it clicks into position.
- * Never use your NEOREST without a filter as this may cause a malfunction.



Tip 1 Cleaning the filter

- When cleaning the filter by running it under water, make sure to dry the filter thoroughly before reinstalling.
- If the filter becomes extremely dirty, we recommend that you replace it with a new one.

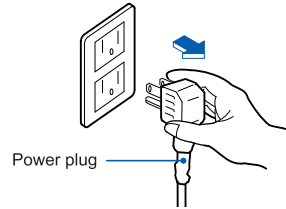
Other Care and Maintenance

Cleaning and inspecting the power plug.

- Check the power plug once a month to make sure that it is in proper working condition.

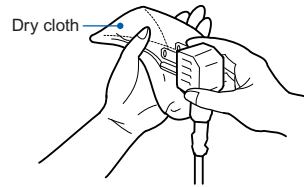
1 Remove the power plug.

- Grasp plug (never the cord) and pull straight out.



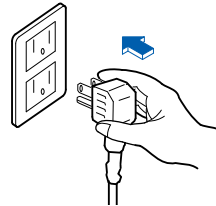
2 Clean the power plug

- Remove any dirt and dust that has collected on the plug prongs with a dry cloth.



3 Insert the power plug

- Insert the power supply plug all the way into the wall outlet.



Cleaning the water supply filter.

- When the water pressure gets low, it's time to clean the feed water supply filter.

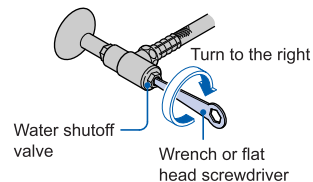
1 Shut off the water valve and turn off the water supply.

- Shut off the water valve with the wrench provided.

Caution!

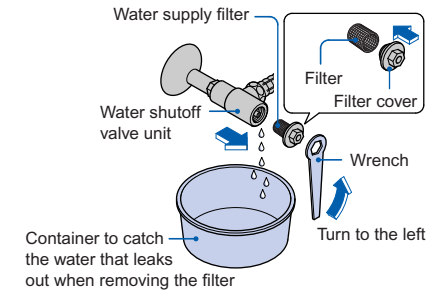


Do not remove the water supply filter with the water shutoff valve in the OPEN position



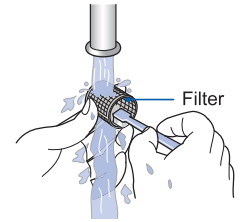
2 Remove the water supply filter

- Remove the filter cover with the wrench.
- The filter will come out with the filter cover.



3 Clean the filter

- Remove the filter and clean the mesh by running it under water. **Tip** 1
- * Use a small brush, such as a toothbrush to remove any dirt that is lodged in the mesh.
- * Remove any dirt that may have deposited inside the water shutoff valve unit with a cotton swab.



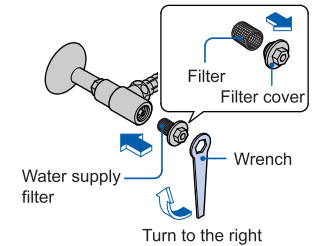
4 Reinstall the water supply filter

- Reassemble the water shutoff valve unit and tighten the filter cover with the wrench

Caution!

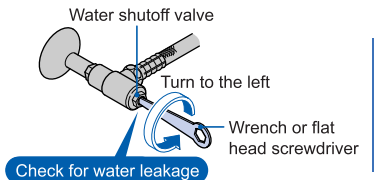
Always perform the following

Be sure to tighten the water supply filter securely. A loose filter may result in water leakage.



5 Open the water shutoff valve

- Open the water shutoff valve with the wrench.
- Confirm that there is no water leakage from the water shutoff valve unit.



Tip 1

Cleaning the filter

- Use only plain water to clean the filter. Do not use detergent or cleaning solution.
 - Do not apply force when handling the filter to avoid bending it.
- If the filter becomes extremely dirty, we recommend that you replace it with a new one.

Cleaning the wand.

- The wand can be cleaned without spraying warm water.

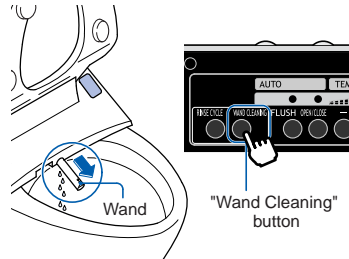
1 Extend the wand.

- Push the "Wand Cleaning" button on the remote controller.

Tip 1

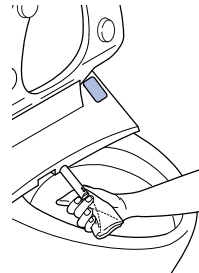
The wand comes out.

- The wand will automatically retract after 5 minutes.



2 Clean the wand.

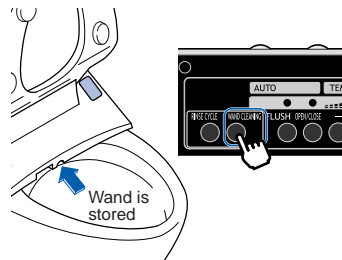
- Wipe the wand clean with a soft damp cloth.
- * Do not apply force when pushing or pulling the wand as this may damage the mechanism.



3 Store the wand.

- Push the "Wand Cleaning" button again.

The wand is stored and automatically washed



Tip 1 Some water will spray from the base of the wand when cleaning it

Cleaning the toilet bowl.

- The toilet bowl can easily be cleaned while flushing with water. Perform routine cleaning of the toilet bowl.
- * Be careful not to get toilet bowl cleaner on the plastic components.

Clean the toilet bowl with toilet bowl cleaner before pushing the "Rinse Cycle" button.

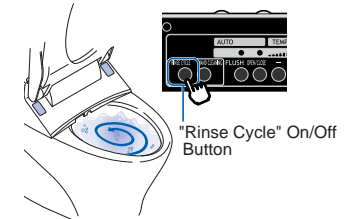
Tip 2

- After using toilet bowl cleaner or disinfectant to clean the toilet bowl, flush the bowl right away (within 3 minutes) and leave the toilet seat and seat cover open. Wipe away any cleaner that spills onto the toilet seat. (To prevent evaporated gas from the toilet bowl cleaner from getting into the main unit of the Washlet.)

1 Flush the toilet bowl.

- Push Rinse Cycle button

Water swirls into the toilet bowl



2 Clean the toilet bowl.

- Clean the toilet bowl while the water is being sprayed into the bowl.
- Water swirls to wash the bowl for 30 seconds.

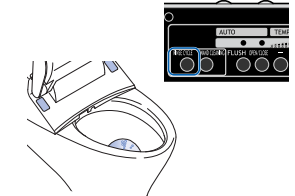
During the Rinse Cycle, pushing the button again will move to the next step of the cycle before 30 seconds is up.

3 Toilet automatically switches to Flush mode

- Flush mode lasts for 30 seconds.
- Clean bottom of bowl (trap-way).

The water in the toilet bowl gets flushed.

Tip 3



4 Automatically refills bowl

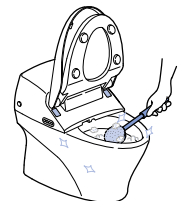
If you want to stop the Rinse Cycle:

- Push the "Stop" button, the unit will flush once and then refill.

Tip 2 Cleaning the toilet bowl

- Cleaning solution can be used to wash the toilet bowl, but be sure to flush out the toilet bowl immediately after use to prevent it from staining the toilet bowl. Keep the seat and lid open after cleaning to prevent vapors from the cleaner from entering the Neorest and causing damage.

Tip 3 Pushing the "Rinse Cycle" button again at any time will interrupt the cycle, stop the water flow and refills the water automatically.



Preventing Damage Due to Frozen Water Pipes

During cold months, or when there is a risk of frozen water pipes, follow the steps below to prevent the pipes and hoses from freezing, which could cause damage to the components and result in water leakage.

How to Prevent Damage (Pipe Drain Method)

- The water in the toilet bowl and Washlet unit are automatically drained at fixed intervals to prevent the pipes and hose from freezing.

Caution!

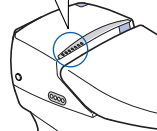
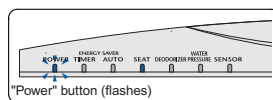
Before performing the pipe drain method turn OFF the "Auto OPEN/CLOSE" button and the "Auto Flush" buttons and keep the toilet bowl seat and cover in the lowered position.

Push the "Rear Cleansing" button on the main controls for 10 seconds or longer.

Tip 1

Begins the pipe drain method.

- The "POWER" light on the main unit flashes on and off.
- Warm water sprays from the stored wand at 5 minute intervals.
- The water in the toilet bowl flushes at 10 minute intervals.



For best results:

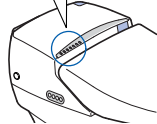
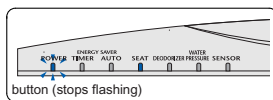
- Set the water temperature and the toilet seat temperature settings on the remote controller to the maximum setting.
- Keep the toilet seat and lid closed.

To Stop the Pipe Drain Function.

Push the "Rear Cleansing" button on the main controls for 10 seconds or longer.

Stops the pipe drain method.

- The "Power" light on the main unit stops flashing.



Tip 1

When there is a risk of frozen pipes:

- Refrain from using the energy saving functions to avoid a greater risk of frozen pipes. To turn off the Energy Saving Timer ON/OFF, see page 24. To turn off the Auto ON/OFF, see page 27.
- Even when not using the unit over extended periods of time, be sure to keep the power supply plug plugged into the wall outlet and the "POWER" button ON.

Troubleshooting

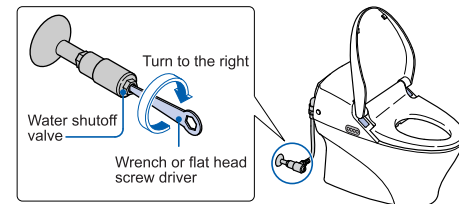


WARNING



Always perform the following

If water leakage occurs, close the water shutoff valve and turn off the water.



- Please check the following before calling for service.

Performance

Problem	Possible Cause	Solution
Completely fails to operate	Is there a power outage or is the circuit breaker out?	Wait until the power is restored. Turn the circuit breaker back ON.
	Is the "Power" light on the main unit OFF?	Push the "Power" button on the main controls. See page 12.

Rear Wash · Front Wash

Problem	Possible Cause	Solution
Water will not spray.	Has water stopped flowing from the main supply?	Push the stop button and wait until the main water supply is restored.
	Is the water shutoff valve closed?	Open the water shutoff valve. (See page 12.)
The water pressure is low.	Is the toilet seat sensor working properly?	Refer to the toilet seat sensor instructions on page 44.
	Is the water pressure setting set too low?	Push the water pressure adjustment button on the remote controller.
The wash water is too cold	Is the water supply filter dirty?	Clean the water supply filter. (See page 34.)
	Is the water temperature setting button OFF or set too low?	Adjust the water temperature by pushing the + or - buttons on the remote controller. (See page 15.)
The wash water stops spraying while the unit is in use	If the "Rear Wash", "Soft Wash" or "Front wash" button are pushed, the water spray automatically stops after 5 minutes.	Push the "Rear Wash", "Soft Wash" or "Front wash" button again. (See page 13.)
	Is the toilet seat sensor working properly?	Refer to the toilet seat sensor instructions on page 44.

Rear Wash · Front Wash (Continued)

Problem	Possible Cause	Solution
Water sprays into the toilet bowl from the wand for a few seconds when sitting on the toilet seat	When the toilet seat sensor is enabled, a small amount of water is discharged before warm water is sprayed from the wand. Also, changing your position while seated on the toilet will cause the toilet seat sensor to turn ON or OFF and a small amount of water may discharge from the wand area. This is not due to a malfunction.	—
Water pressure and nozzle position reset after each use.	After five minutes, the wand settings reset. Any adjustments made are lost.	If you need to keep your settings, see page 14.

Heated Toilet Seat

Problem	Possible Cause	Solution
The toilet seat does not get warm.	Is the toilet seat temperature setting turned OFF or set too low?	Adjust the seat temperature by pushing the + or - buttons on the remote controller. (See page 15.)
	Is the timer on "Energy Saving" mode?	It takes 15 minutes for the toilet seat to get warm after sitting on it. (See page 24.)
	Is the Auto Temperature Preset turned ON?	The toilet seat is warmed up for a while when seated. (See page 27.)
The toilet seat is too cold.	In case of continued sitting, the seat will shut off after 1 hour. Seat heater will restart after person gets up.	—

Warm Air Drying

Problem	Possible Cause	Solution
The warm air dryer does not get warm.	Is the warm air dryer temperature set too low?	Adjust the dryer temperature by pushing the + or - buttons on the remote controller. (See page 15.)
The warm air dryer stops working while in use.	If the "dry" button is pushed, the warm air dryer automatically stops after 10 minutes.	Push the "dry" button again to restart the warm air dryer.
	Is the toilet seat sensor working properly?	Refer to the toilet seat sensor instructions on page 44.
The warm air dryer completely fails to operate.	Is the toilet seat sensor working properly?	Refer to the toilet seat sensor instructions on page 44.

Deodorizer

Problem	Possible Cause	Solution
The deodorizer is not working.	Is the toilet seat sensor working properly?	Refer to the toilet seat sensor instructions on page 44.
Odors are sometimes not eliminated thoroughly.	Is the deodorizer filter dirty?	Clean the deodorizer filter. (See page 33.)
The deodorizer turns on by itself.	In the following situations, the toilet seat sensor detects motion and activates the deodorizer: <ul style="list-style-type: none"> ● when standing in front of the toilet seat; ● when closing/opening the toilet seat and lid; ● when cleaning the toilet; ● when using the toilet bowl wash lever. 	—

Energy Saving Functions

Problem	Possible Cause	Solution
The Auto ON/OFF does not work even after pushing the button.	It may take 2~3 days to determine the correct time frame for when the toilet is not used frequently.	—
	If the toilet is used at the same time 3 times a week or more, the energy saving function may not work. The time will not be considered an energy save time.	—
The Energy Saving functions fail to operate.	In case of power failure or power cord disconnect.	Energy Saving will not work correctly on that day. The feature will begin working on the next day.
	When batteries in remote controller are replaced.	User settings may be changed. Please reset preferred settings. (See page 23 or 25.)
The Energy Saving function fails to operate.	Didn't you replace the battery? (If so, the settings may be cancelled.)	Make the settings again by pressing the Timer ON/OFF button and the Auto ON/OFF button. (See page 23 or 25.)

Auto OPEN/CLOSE

Problem	Possible Cause	Solution
The lid will not automatically open and close.	Is the Auto OPEN/CLOSE function OFF? When it is OFF, the Auto OPEN/CLOSE will not be display.	Push the "Auto" function of the seat and lid OPEN/CLOSE on the remote controller to turn it ON. (See page 17, 18.)
	Is the sensor light on the main control display ON? Are you facing the toilet when standing in front of it?	Stand facing the toilet. (See page 17, 18.)
	Is the toilet seat sensor or motion detection sensor covered with something?	Make sure that the sensors are not covered as this will prevent the infrared light from projecting.
	Is the toilet seat sensor or motion detection sensor dusty or wet?	Remove any dust or water drops that may have settled on the sensors.
	Are there any wall hangings or fixtures located directly in front of the toilet?	Do not hang any decorations or fixtures directly in front of the unit.
	Was the lid manually closed or closed by remote. The lid will not reopen for 10 seconds.	Move away 1 foot and wait ten seconds, then try again. (See page 17.)
	When lid is opened, but the seat is not sat on for more than 6 seconds, then the lid will not close for 5 minutes.	—
	When both seat and lid are opened, but it is not stood in front of for more than 6 seconds, then the lid will not close for 5 minutes.	—
The lid closes by itself.	Is the sensor light located on the main unit display OFF? If the light is OFF and the user stands facing the toilet, the lid will not automatically close.	Move away from the toilet and wait for approximately 90 seconds. (See page 18.)
	The sensors in the toilet seat sensor and motion detection sensor may not work properly depending upon the way in which the user sits on the toilet seat, or stands in front of it, or the color of the clothing or type of fabric worn.	If you sit down deep on the toilet seat, change the position where you are standing or raise your clothes, the sensor will detect the bare skin.
	Is the toilet seat sensor or motion detection sensor covered up by your clothing? Are the sensors covered with dust or water?	Make sure that the sensors are not covered, as this will prevent the infrared light from projecting.

Remote Controller

Problem	Possible Cause	Solution
The remote controller does not work.	Does the dead battery warning LED blink?	Replace the batteries (See page 11.)
	Are the batteries inserted in the correct position (+/-)?	Reinsert the batteries in the correct position. (See page 11.)
	Is the remote controller transmitter covered with something?	Remove any objects that may be covering the transmitter.
	Is the remote controller transmitter dirty or wet?	Remove any dirt or water that may have settled on the transmitter.
Settings are lost when the batteries are changed.	Is the toilet seat sensor working properly?	Refer to the toilet seat sensor instructions on page 44.
	The remote controller will reset when the batteries are changed. Any settings will be lost.	Reset the preferred settings.

Remote Controlled Flushing

Problem	Possible Cause	Solution
Nothing happens when the remote control button for flushing the toilet bowl is pushed.	Does the dead battery warning LED blink?	Replace the batteries. (See page 11.)
	Has the button been pushed repeatedly?	The remote control buttons for flushing the toilet bowl cannot be pushed repeatedly. Wait 10 seconds before pushing the buttons again.
	Is the remote controller transmitter dirty or wet?	Remove any dirt or water that may have settled on the transmitter.

Remote Controlled Toilet Seat/Lid OPEN/CLOSE

Problem	Possible Cause	Solution
Nothing happens when the remote control button for opening/closing the toilet seat/lid is pushed.	Does the dead battery warning LED blink?	Replace the batteries. (See page 11.)
	Is the remote controller transmitter dirty or wet?	Remove any dirt or water that may have settled on the transmitter.

Toilet Seat Sensor

Problem	Possible Cause	Solution
Even when not seated on the toilet seat, the "Rear Wash", "Air deodorizer" and "Warm Air Dryer" functions turn on when the buttons are pushed.	Is the toilet seat sensor covered with something?	Make sure that the sensors are not covered, as this will prevent the infrared light from projecting. (See page 14.)
	Is the toilet seat sensor dirty or wet?	Remove any dirt or water that is on the toilet seat sensor.
Even when seated on the toilet seat, the "Rear Wash", "Air deodorizer" and "Warm Air Dryer" functions do not turn on when the buttons are pushed. Or, the "Auto Open/Close" and the "Auto Flush" fail to operate.	The sensors in the toilet seat sensor may not work properly depending upon the way in which the user sits on the toilet seat, or stands in front of it, or the color of the clothing or type of fabric worn.	If you sit down deep on the toilet seat, or raise the clothing you are wearing to allow the sensor to detect bare skin.
	Is the toilet seat sensor covered up by your clothing? Are the sensors covered with dust or water?	Make sure that the sensors are not covered, as this will prevent the infrared light from projecting.

Auto Flush

Problem	Possible Cause	Solution
The toilet bowl flush function does not automatically turn on.	Is the Auto Flush function OFF? When it is OFF, the "Flush" light on the remote controller display will not be lit up.	Push the Auto Flush on the remote controller to turn it ON. (See page 21~22.)
	Once the Auto Flush button has been pushed, the Auto Flush function will not operate again until 60 seconds have passed.	Use the "Flush" button on the remote controller to flush the toilet.
	Is the toilet seat sensor or motion detection sensor covered with something?	Refer to the toilet seat sensor instructions on page 44.
	When the remote controller is used to flush the toilet, the Auto Flush function will not operate. However, if the motion detection sensor continues to detect motion for more than 60 seconds, the Auto Flush function will operate.	—
	Is the toilet seat sensor or motion detection sensor dirty or wet?	Remove any dirt or water that is on the toilet seat sensor or motion detection sensor.
	Are there any wall hangings or fixtures located directly in front of the toilet?	Do not hang any decorations or fixtures directly in front of the unit.
	In case of sitting for less than 6 seconds, the automatic flush will not activate.	Sit for more than 6 seconds. See page 21.
	When both seat and lid are opened, but it is not stood in front of for more than 6 seconds, the automatic flush will not activate.	Stand in front for more than 6 seconds. See page 22.

Auto Flush (Continued)

Problem	Possible Cause	Solution
The toilet bowl flush function does not automatically turn on.	Is the "sensor" light on the main unit display OFF? When it is OFF, standing in front of the toilet will not activate the Auto Flush function.	Move away from the toilet and wait for 3 seconds. (See page 21~22.)
The toilet flushes by itself.	The sensors in the toilet seat sensor and motion detection sensor may not work properly depending upon the way in which the user sits on the toilet seat, or stands in front of it, or the color of the clothing or type of fabric worn.	If you sit down deep on the toilet seat, change the position where you are standing or raise your clothes, the sensor will detect the bare skin.
	Is the toilet seat sensor or motion detection sensor covered up by your clothing? Are the sensors covered with dust or water?	Make sure that the sensors are not covered, as this will prevent the infrared light from projecting.

Other

Problem	Possible Cause	Solution
The toilet does not flush properly (the "water pressure" light is flashing).	Is the water shutoff valve open?	Make sure that the water shutoff valve is open enough to allow proper flow of water.
	Is the water supply filter dirty?	Clean the water supply filter. (See page 34.)
	Is water being used in other areas of the household or building? (The "water pressure" light flashes if the water pressure is too low for the toilet to flush properly.)	—
Water does not spray when the toilet is flushed.	Is the water shutoff valve closed?	Make sure that the water shutoff valve is open enough to allow proper flow of water.
	Has the water supply to the house been cut off?	Wait until the water supply is restored.
Water sprays from the area near the wand even though no one is seated on the toilet seat.	In the following situations, the toilet seat sensor may become activated: ● when standing in front of the toilet seat; ● when closing/opening the toilet seat and lid; ● when cleaning the toilet; ● when using the toilet bowl flush lever	—
	If the temperature inside the toilet unit is too cold, the Washlet automatically drains itself of water to prevent frozen pipes. When this happens, you will hear water draining for approximately 10 seconds, but this is not a malfunction.	—
Water leaks from the pipe fittings.	Are the pipes loose?	Tighten the pipes with a monkey wrench.

Specifications

Item		Contents		
Power		120 V AC, 60 Hz		
Power Usage		1288 W		
Average Power Consumption per Hour *1		21 Wh		
Cord Length		3 feet		
Toilet Bowl Functions	Flush Volume		1.6 Gallons per Flush (6.0 LPF) with alternate 1.2 Gallon light flush (4.5 LPF)	
	Water supply system		Direct connection to city water tap	
	Flush Type		"Cyclone" Siphon jet	
	Bowl Style		Elongated	
Freeze proofing	Flushing system	Flushing volume	40 L/h	
Washlet Functions	Washlet	Wand Flow Rate	Rear	9-14.5 oz/m (270-430 mL/min) (29 PSI max pressure)
			Soft	9-14.5 oz/m (270-430 mL/min) (29 PSI max pressure)
			Front	9.5-14.5 oz/m (290-430 mL/min) (29 PSI max pressure)
	Water Temp		86-104°F (30-40°C)	
	Heater Power Consumption		1200 W	
	Safety		Temperature Fuse, Bi-metal sensor (auto reset), and Float switch (prevent boil)	
	Dryer	Temperature *2		104-138°F (40-59°C)
		Air Volume		10.5 feet ³ /min (0.3 m ³ /min)
		Heater power		350 W
		Safety		Temperature Fuse
	Heated Seat	Temperature		81 - 97°F (27-36°C)
		Heater Power		50 W
		Safety		Temperature Fuse
Deodorizer	Catalyst		Activated Oxygen	
	Air Volume		5.5 feet ³ /min (0.16 m ³ /min)	
Remote Power		2 AA batteries (3 Volt)		
Water Supply Pressure		20-80 PSI, Static (Use a minimum water supply pressure of 10 PSI (0.07MPa) flowing)		
Water Supply Temperature		32 - 96°F (0-35°C)		
Ambient Temperature		32 - 104°F (0-40°C)		
Size		17" x 32.2" x 22.2" (436 x 820 x 564 mm)		
Weight		108 lbs (49 kg) (28.6 lbs (13 kg) top, 79.4 lbs (36 kg) bowl)		

*1 Measuring conditions: The figures shown above are the result of calculation in terms of the annual average (room temperature 59°F(15°C), water temperature 59°F(15°C)) on the assumption that four family members (2 males, 2 females) use it 12 time a day.
As for the timer energy saving function, the average time of use set by timer in a family is calculated in terms of usage rate.

*2 Temperature at our measuring point near the hot air blowout port.

Limited Warranty

Three Year Limited Warranty

- TOTO® warrants its Neorest® brand product ("Product") to be free from defects in materials and workmanship during normal use when properly installed and serviced, for a period of three (3) years from date of purchase. This limited warranty is extended only to the ORIGINAL PURCHASER of the Product and is not transferable to any third party, including but not limited to any subsequent purchaser or owner of the Product. This warranty applies only to TOTO Product purchased and installed in North, Central and South America.
- TOTO's obligations under this warranty are limited to repair, replacement or other appropriate adjustment, at TOTO's option, of the Product or parts found to be defective in normal use, provided that such Product was properly installed, used and serviced in accordance with instructions. TOTO reserves the right to make such inspections as may be necessary in order to determine the cause of the defect. TOTO will not charge for labor or parts in connection with warranty repairs or replacements. TOTO is not responsible for the cost of removal, return and/or reinstallation of the Product.
- This warranty does not apply to the following items:
 - Damage or loss sustained in a natural calamity such as fire, earthquake, flood, thunder, electrical storm, etc.
 - Damage or loss resulting from any accident, unreasonable use, misuse, abuse, negligence, or improper care, cleaning, or maintenance of the Product.
 - Damage or loss resulting from sediments or foreign matter contained in a water system.
 - Damage or loss resulting from improper installation or from installation of the Product in a harsh and/or hazardous environment, or improper removal, repair or modification of the Product. This includes locations where the water pressure is above local codes or standards. (NOTE: Product model codes allow a maximum of 80 PSI. Check local codes or standards for requirements).
 - Damage or loss resulting from electrical surges or lightning strikes or other acts which are not the fault of TOTO or which the Product is not specified to tolerate.
 - Damage or loss resulting from normal and customary wear and tear, such as gloss reduction, scratching or fading over time due to use, cleaning practices or water or atmospheric conditions, including but not limited to, the use of bleach, alkali, acid cleaners, dry (powder) cleaners or any other abrasive cleaners or the use of metal or nylon scrubbers.
- If the Danger Label which has been placed over the seams on the back of the Product's top unit is broken or otherwise not intact, this limited warranty is void.
- In order for this limited warranty to be valid, proof of purchase is required. TOTO encourages warranty registration upon purchase to create a record of Product ownership at <http://www.totousa.com>. Product registration is completely voluntary and failure to register will not diminish your limited warranty rights.
- If the Product is used commercially or is installed outside of North, Central or South America, TOTO warrants the Product to be free from defects in materials and workmanship during normal use for one (1) year from the date of installation of the Product, and all other terms of this warranty shall be applicable except the duration of the warranty
- THIS WARRANTY GIVES YOU SPECIFIC LEGAL RIGHTS. YOU MAY HAVE OTHER RIGHTS WHICH VARY FROM STATE TO STATE, PROVINCE TO PROVINCE OR COUNTRY TO COUNTRY.
- To obtain warranty repair service under this warranty, you must take the Product or deliver it prepaid to a TOTO service facility together with proof of purchase (original sales receipt) and a letter stating the problem, or contact a TOTO distributor or products service contractor, or write directly to TOTO U.S.A., INC., 1155 Southern Road, Morrow, GA 30260 (888) 295 8134 or (678) 466-1300, if outside the U.S.A. If, because of the size of the Product or nature of the defect, the Product cannot be returned to TOTO, receipt by TOTO of written notice of the defect together with proof of purchase (original sales receipt) shall constitute delivery. In such case, TOTO may choose to repair the Product at the purchaser's location or pay to transport the Product to a service facility.

WARNING! TOTO shall not be responsible or liable for any failure of, or damage to, this Product caused by either chloramines in the treatment of public water supply or cleaners containing chlorine (calcium hypochlorite). NOTE: The use of a high concentrate chlorine or chlorine related products can seriously damage the fittings. This damage can cause leakage and serious property damage.

THIS WRITTEN WARRANTY IS THE ONLY WARRANTY MADE BY TOTO. REPAIR, REPLACEMENT OR OTHER APPROPRIATE ADJUSTMENT AS PROVIDED UNDER THIS WARRANTY SHALL BE THE EXCLUSIVE REMEDY AVAILABLE TO THE ORIGINAL PURCHASER. TOTO SHALL NOT BE RESPONSIBLE FOR LOSS OF THE PRODUCT OR FOR OTHER INCIDENTAL, SPECIAL OR CONSEQUENTIAL DAMAGES OR EXPENSES INCURRED BY THE ORIGINAL PURCHASER, OR FOR LABOR OR OTHER COSTS DUE TO INSTALLATION OR REMOVAL, OR COSTS OF REPAIRS BY OTHERS, OR FOR ANY OTHER EXPENSE NOT SPECIFICALLY STATED ABOVE. IN NO EVENT WILL TOTO'S RESPONSIBILITY EXCEED THE PURCHASE PRICE OF THE PRODUCT. EXCEPT TO THE EXTENT PROHIBITED BY APPLICABLE LAW, ANY IMPLIED WARRANTIES, INCLUDING THAT OF MERCHANTABILITY OR FITNESS FOR USE OR FOR A PARTICULAR PURPOSE, ARE EXPRESSLY DISCLAIMED. SOME STATES DO NOT ALLOW LIMITATIONS ON HOW LONG AN IMPLIED WARRANTY LASTS, OR THE EXCLUSION OR LIMITATION OF INCIDENTAL OR CONSEQUENTIAL DAMAGES, SO THE ABOVE LIMITATION AND EXCLUSION MAY NOT APPLY TO YOU.