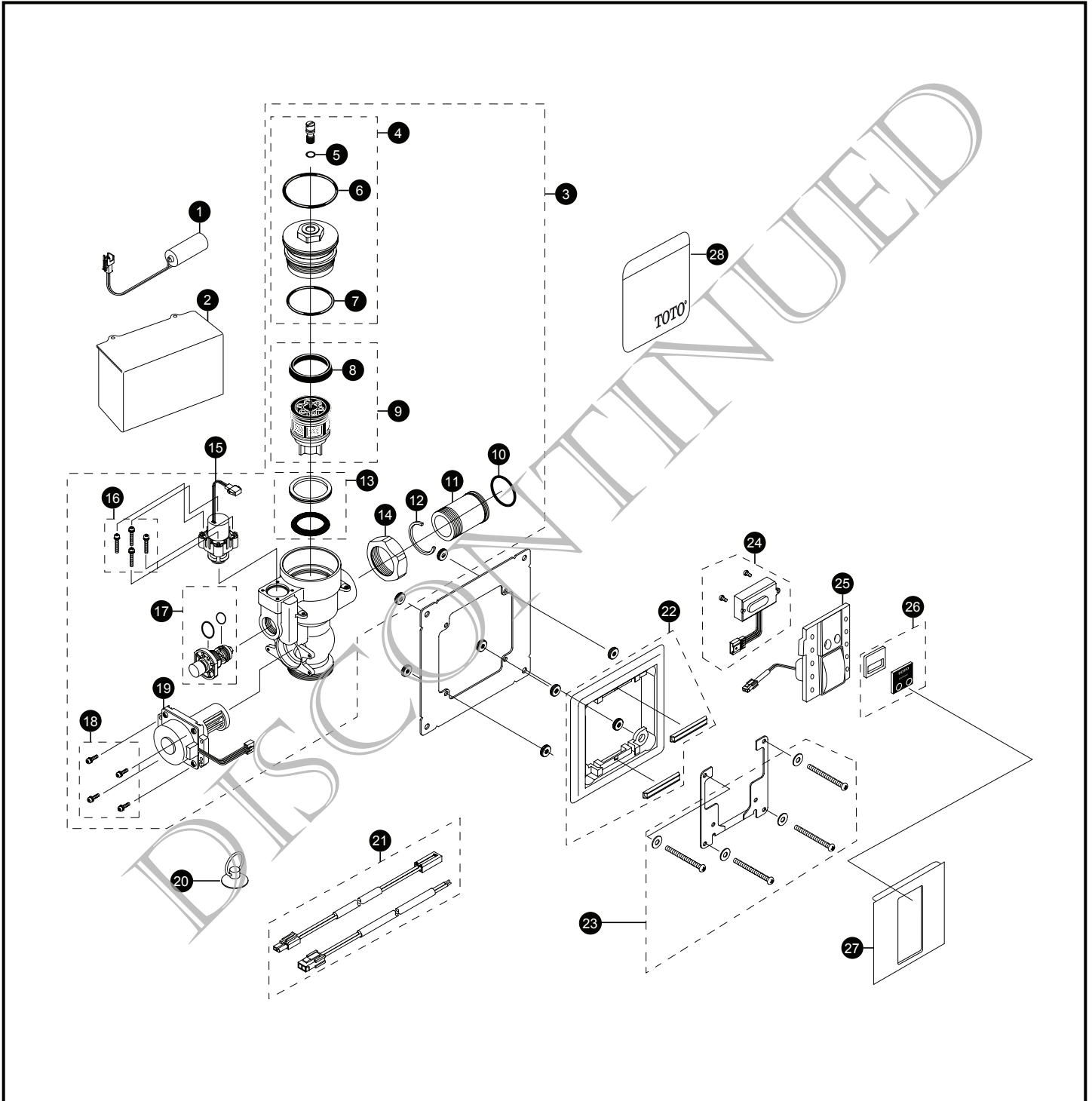


# TET3LN#SS Series

TET3LN31#SS  
TET3LN32#SS  
TET3LN33#SS  
TET3LN#SS

## EcoPower® Sensor High Efficiency Toilet Flush Valve Concealed (4" x 4") - 1.28 Gpf Hydro-Power Charge



# TET3LN#SS Series

TET3LN31#SS  
TET3LN32#SS  
TET3LN33#SS  
TET3LN#SS

## EcoPower® Sensor High Efficiency Toilet Flush Valve Concealed (4" x 4") - 1.28 Gpf Hydro-Power Charge

Item	Part	Description	Item	Part	Description
1	THP3053	Back-Up Battery	<b>Vacuum Breaker Sets</b>		
2	TH559EDV548	Toilet Valve Controller	VB13RB-31		Concealed - Back Spud (1-1/2" Outlet)
3	TH559EDV557	HET Valve Body Assembly	VB9RB-32		Concealed - Top Spud (1-1/2" Outlet)
4	TH559EDV507	Valve Cap Assembly (Toilet 1.6/1.28 GPF)	VB13RB-33		Concealed - Back Spud Floor Mount (1-1/2" Outlet)
5	TH305SV111	O-Rings (Cap Screw) (10 Pieces)	<b>Note:</b> For additional information, refer to the individual vacuum breaker parts sheets.		
6	TH305SV120	O-Rings (Valve Cap) (10 Pieces)			
7	TH305SV112	O-Rings (Valve Guide) (10 Pieces)			
8	TH305SV103	U-Packing (For Piston) (10 Pieces)			
9	TH323V103R	Piston Assembly (1.6/1.28 GPF)			
10	TH305SV106	O-Rings (Tail Piece) (10 Pieces)			
11	TH305SV114	Tail Piece			
12	TH305SV105	Locking Rings (10 Pieces)			
13	TH321	Seal Washer Kit			
14	TH305SV113	Nut			
15	TH559EDV510	Solenoid Unit & Diaphragm Assy			
16	TH559EDV301	Double Sems Screws M3 (4 Pieces)			
17	TH559EDV558	Manual Flushing Button			
18	TH559EDV505	Double Sems Screws M3 (4 Pieces)			
19	TH559EDV503	Hydro-Power Generator (Toilet)			
20	TH559EDV346	Suction Tool Set			
21	TH559EDV556	Extension Wire Set			
22	TH559EDV347	Surface Mounting Frame			
23	TH559EDV350	Adjusting Screw Set			
24	TH559EDV550	Sensor Controller & Screws Set			
25	TH559EDV552	Touch Button Assembly Unit			
26	TH559EDV553	Cover Glass			
27	TH559EDV555	4" x 4" Front Panel			
28	0EU3020	1.28 Water Saving Sticker			

### Product Number Explanations

#### Flush Valve

(T) Fitting  
(E) Electronic  
(T) Toilet 1.28  
(3) Concealed 4"x4" Plate  
(G) Dynamo (Hydro Generator)  
(N) Neutral Rough-In  
(31) 1-1/2" Outlet\_Back Spud  
(32) 1-1/2" Outlet\_Top Spud  
(33) 1-1/2" Outlet\_Back Spud Floor Mount  
(#SS) Stainless Finish